

## GROUP 35A

# BASIC BRAKE SYSTEM

### GENERAL

#### OUTLINE OF CHANGES

The following maintenance service points have been established to correspond to the addition of a pressure sensor. Maintenance service procedures not listed below are the same as before.

# MASTER CYLINDER AND BRAKE BOOSTER

## REMOVAL AND INSTALLATION

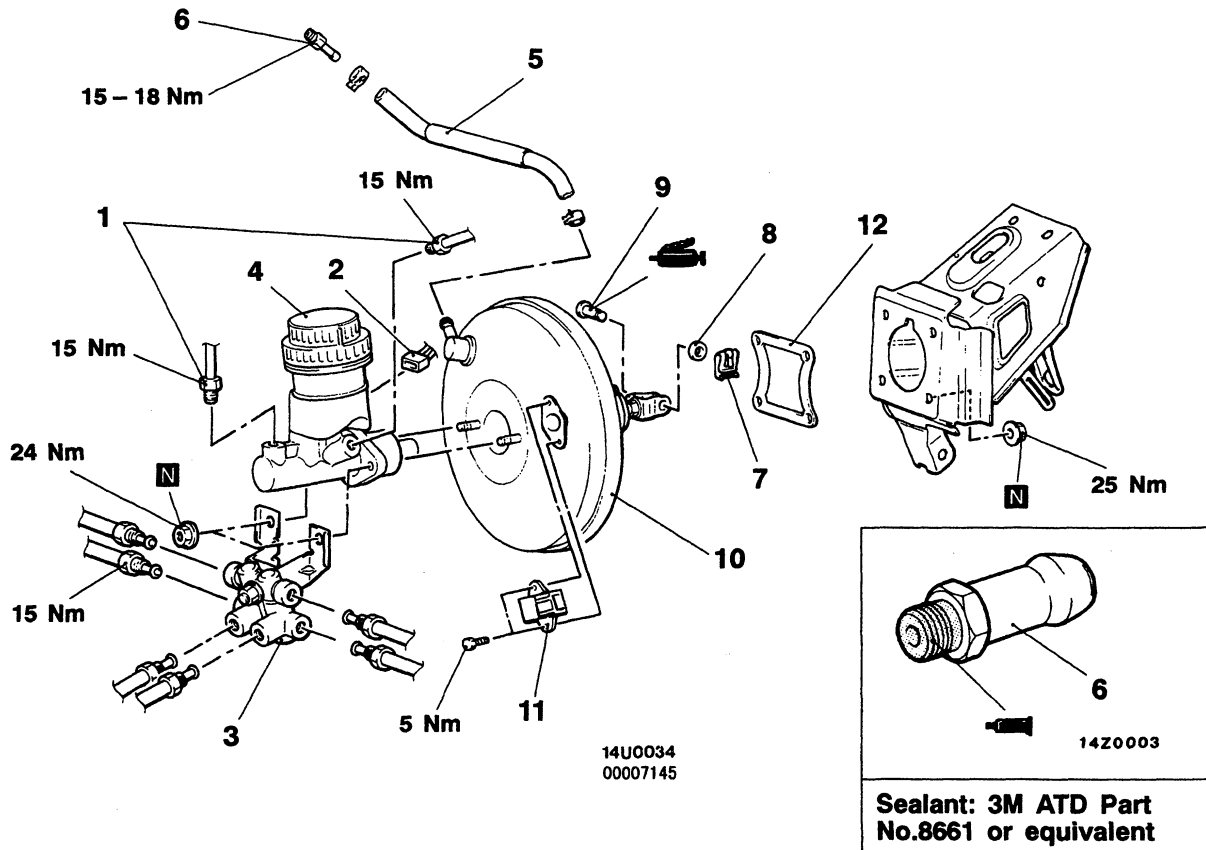
### Pre-removal Operation

- Brake Fluid Draining

### Post-Installation Operation

- Brake Fluid Supplying
- Brake Line Bleeding
- Brake Pedal Adjustment

<L.H. drive vehicles>



### Removal steps

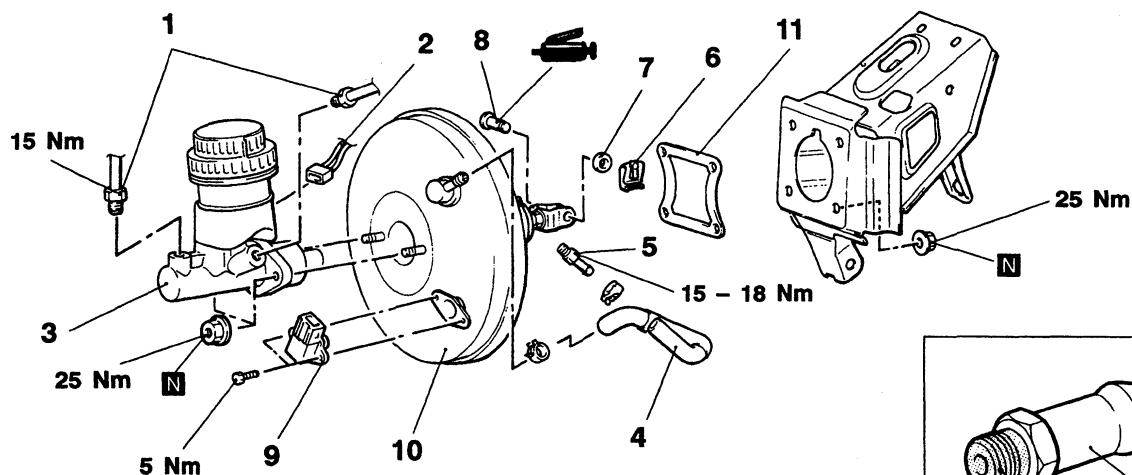
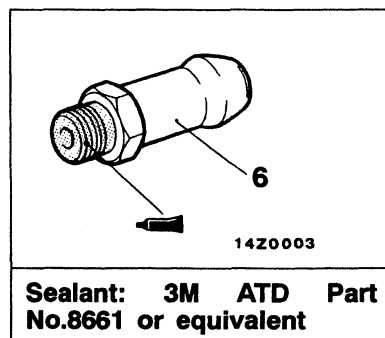
1. Brake pipe connection
  2. Brake fluid level sensor connector
  3. Proportioning valve bracket
  4. Master cylinder assembly
- B◄ • Clearance adjustment between brake booster push rod and primary piston
- A◄ 5. Vacuum hose (With built-in check valve)
6. Fitting

7. Retaining clip
8. Washer
9. Retaining ring bolt
10. Brake booster
11. Brake vacuum sensor
12. Sealer

### NOTE

For each service point, refer to Basic Manual.

&lt;R.H. drive vehicles&gt;

14U0033  
00007146**Removal Steps**

1. Brake pipe connection
2. Brake fluid level sensor connector
3. Master cylinder assembly
  - Clearance adjustment between brake booster push rod and primary piston
- ▶B◀ 4. Vacuum hose (With built-in check valve)
- ▶A◀ 5. Fitting
6. Retaining clip

7. Washer
8. Retaining ring bolt
9. Brake vacuum sensor
10. Brake booster
11. Sealer

**NOTE**

For each service point, refer to Basic Manual.